



## 3 Mehrfamilienhäuser mit 30 Wohneinheiten in Bielefeld, Theesen



### Hollmann Group GmbH & Co. KG

Charlotte-Auerbach-Str. 4  
28816 Stuhr  
Deutschland

+49 421 80608235

info@hollklass.de

### Team Hollmann Group

+49 1515 2551952



# Lageplan



# Übersicht Haus 1 bis 3



## Haus 1

Nr.	Etage	Lage	Fläche in m <sup>2</sup>	1 Zimmer	3 Zimmer
1.1	EG	links	69,67		x
1.2	EG	links	32,33	x	
1.3	EG	rechts	32,33	x	
1.4	EG	rechts	69,67		x
1.5	1.OG	links	69,67		x
1.6	1.OG	links	32,33	x	
1.7	1.OG	rechts	32,33	x	
1.8	1.OG	rechts	69,67		x
1.9	DG	links	74,04		x
1.10	DG	rechts	74,04		x
			<b>556,08</b>		

## Haus 2

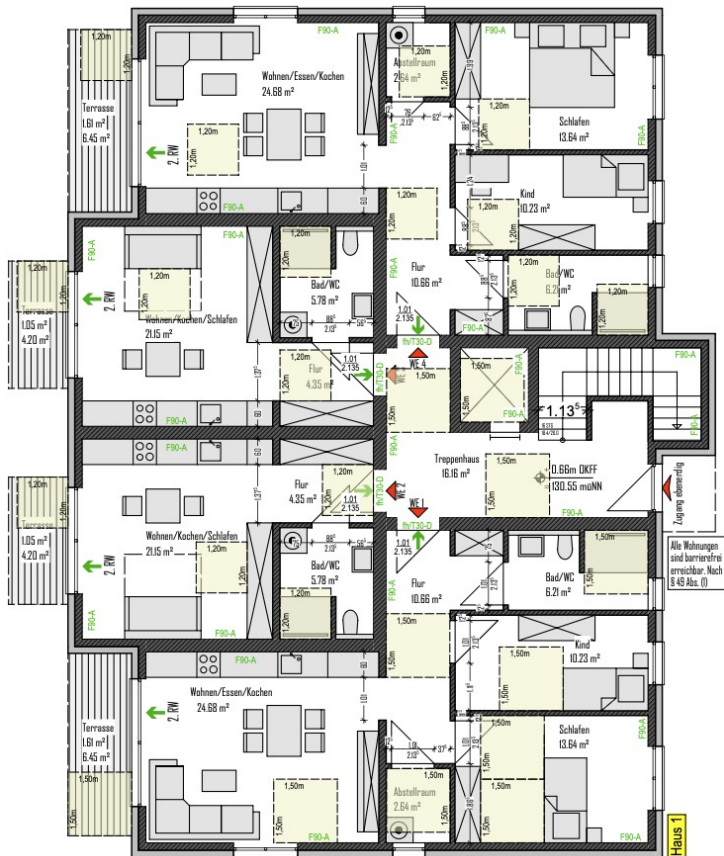
Nr.	Etage	Lage	Fläche in m <sup>2</sup>	2 Zimmer	3 Zimmer
2.1	EG	links	69,67		x
2.2	EG	links	32,33	x	
2.3	EG	rechts	32,33	x	
2.4	EG	rechts	69,67		x
2.5	1.OG	links	69,67		x
2.6	1.OG	links	32,33	x	
2.7	1.OG	rechts	32,33	x	
2.8	1.OG	rechts	69,67		x
2.9	DG	links	74,04		x
2.10	DG	rechts	74,04		x
			<b>556,08</b>		

## Haus 3

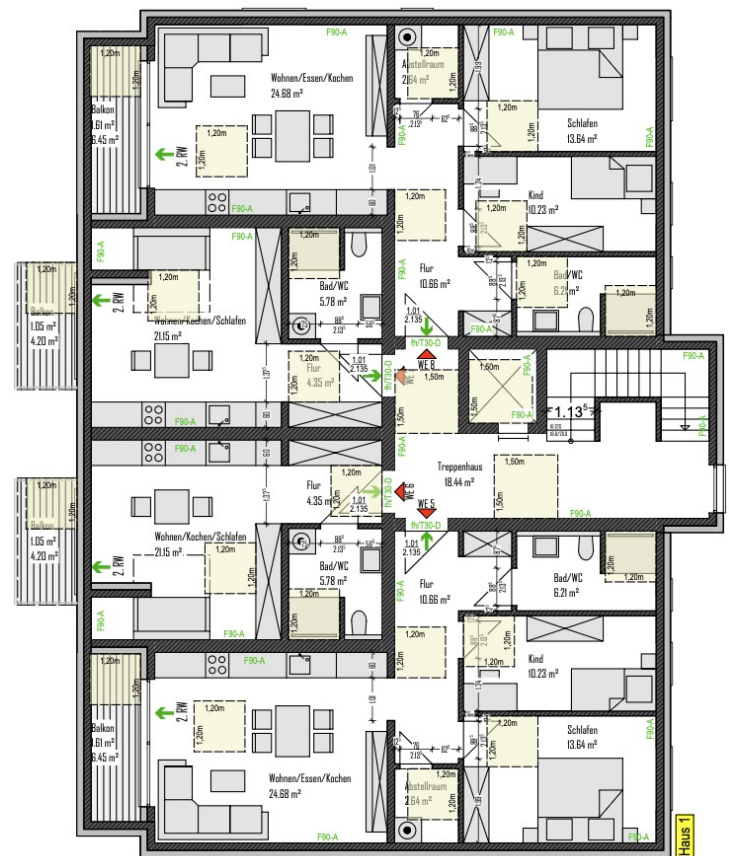
Nr.	Etage	Lage	Fläche in m <sup>2</sup>	2 Zimmer	3 Zimmer
3.1	EG	links	69,67		x
3.2	EG	links	32,33	x	
3.3	EG	rechts	32,33	x	
3.4	EG	rechts	69,67		x
3.5	1.OG	links	69,67		x
3.6	1.OG	links	32,33	x	
3.7	1.OG	rechts	32,33	x	
3.8	1.OG	rechts	69,67		x
3.9	DG	links	74,04		x
3.10	DG	links	74,04		x
			<b>556,08</b>		

# Haus 1

## Grundriss



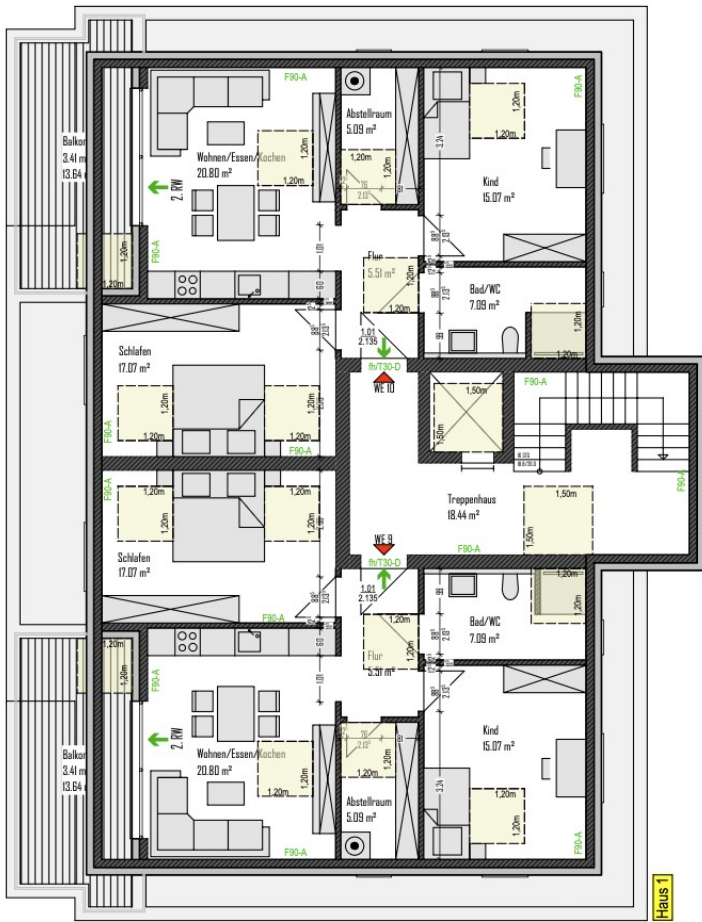
EG



1.OG

# Haus 1

## Grundriss

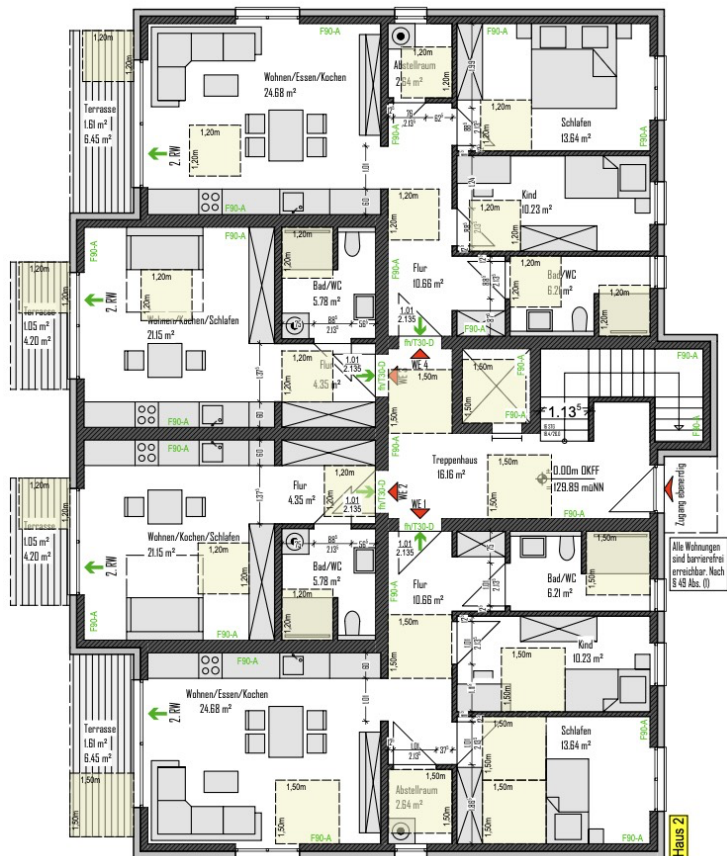


DG

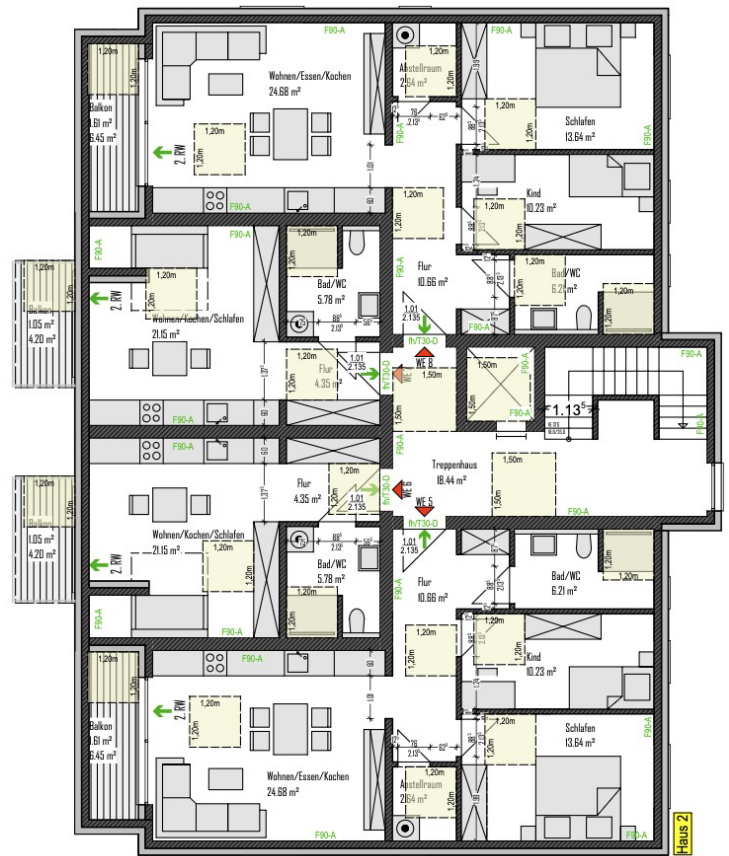


Keller

# Haus 2 Grundriss

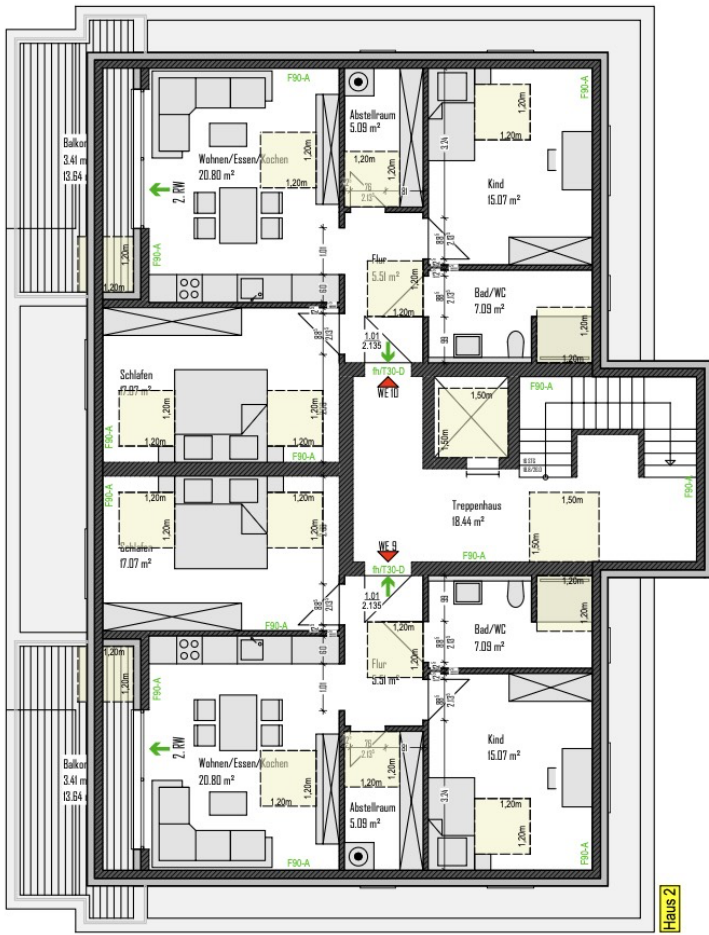


EG



1.OG

# Haus 2 Grundriss



**DG**

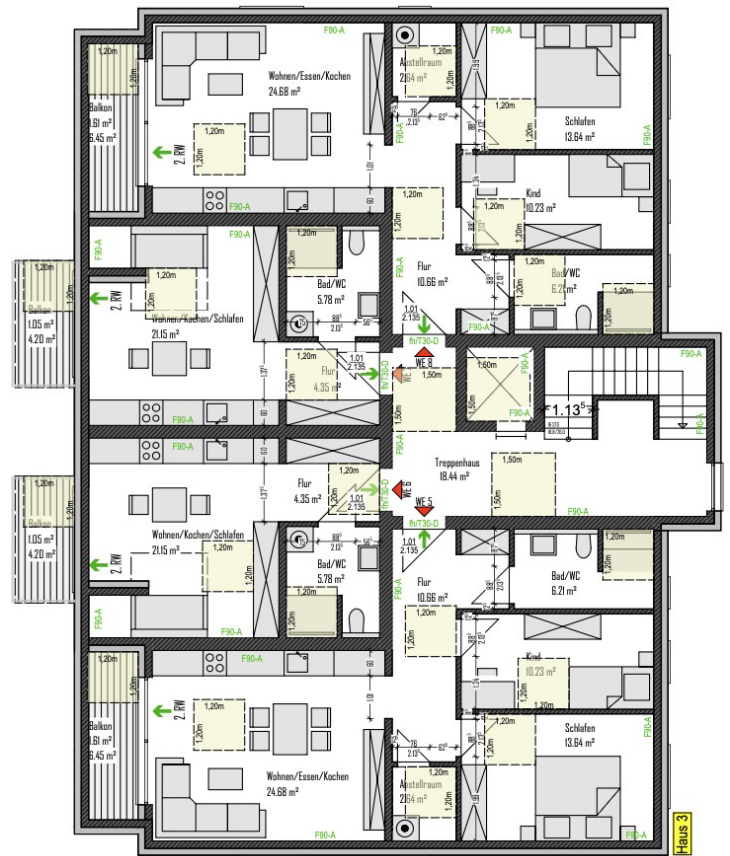


**Keller**

# Haus 3 Grundriss

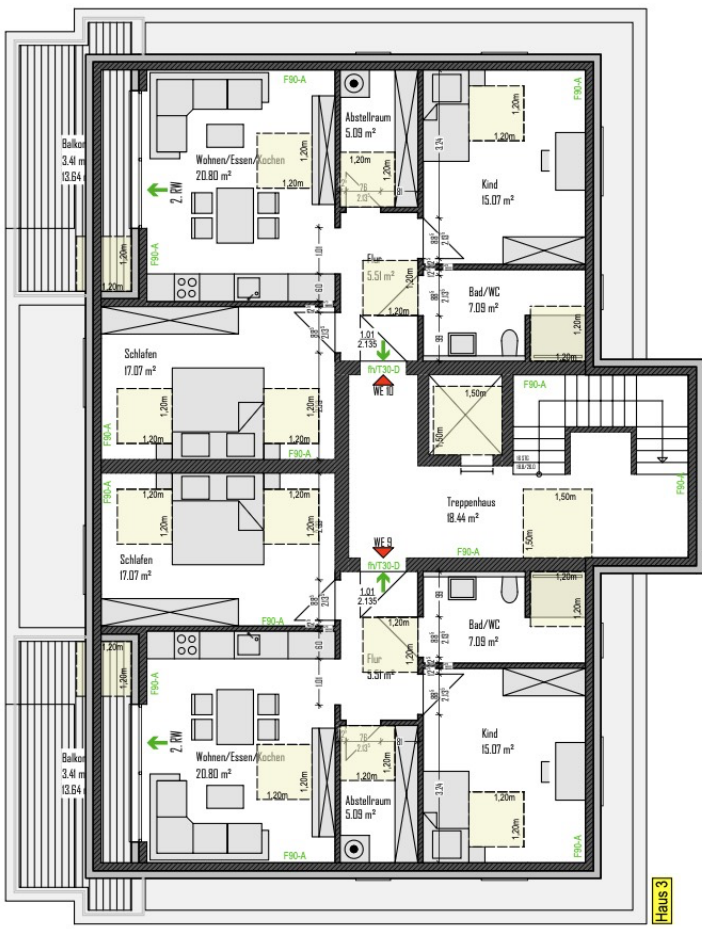


EG



1.OG

# Haus 3 Grundriss

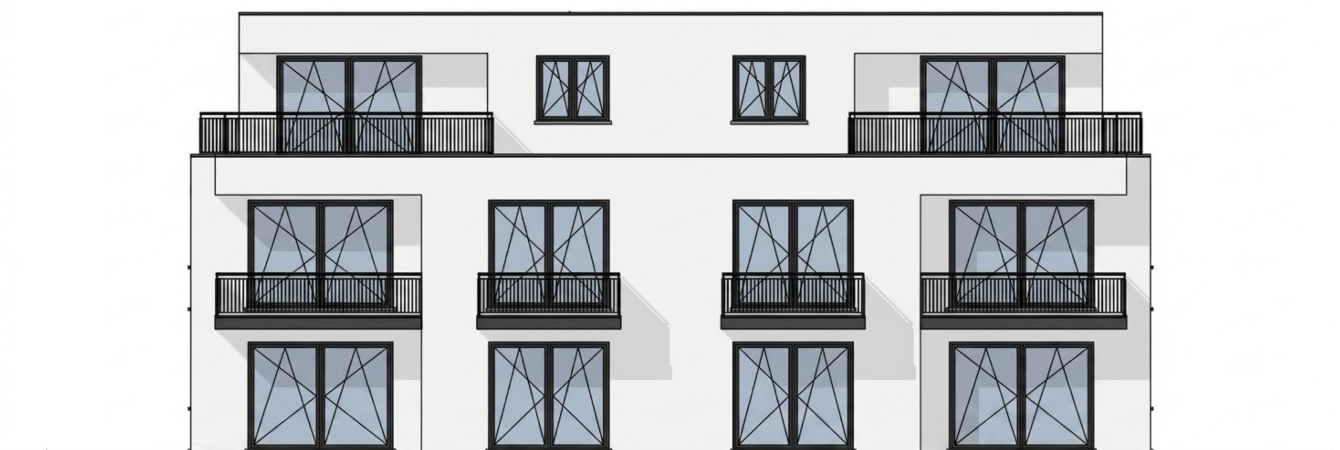


DG



Keller

# Außenansicht



# Außenansicht

